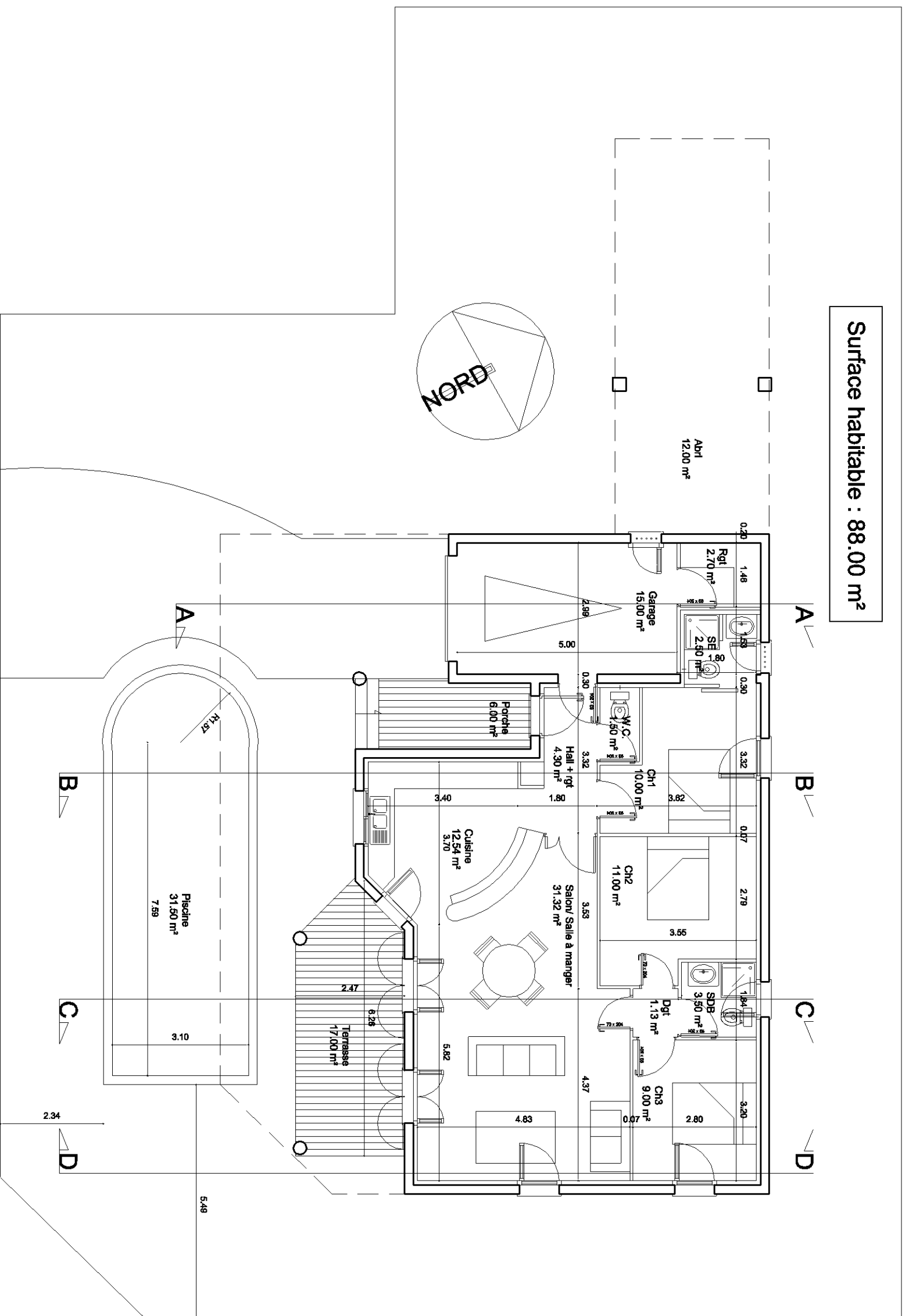


Surface habitable : 88.00 m<sup>2</sup>



Shob = 152.721

Garage = 20.441 m<sup>2</sup>

Terrasse = 17.175 m<sup>2</sup>

Porche = 6.12 m<sup>2</sup>

Abri = 11.859 m<sup>2</sup>

Tot deductions =  
55.60 m<sup>2</sup>

Shon = (156.03 - 55.60) x 0.95  
= 100.43 x 0.95  
= 95.41 m<sup>2</sup>

Villa Villeneuve III

Maître d'ouvrage:  
M. Villeneuve

PLAN

01

Index

Date

Modifications

PHASE

DATE

N°

Index

Echelle

ESQUISSE

N°

Index

Echelle

1  
A  
1/100