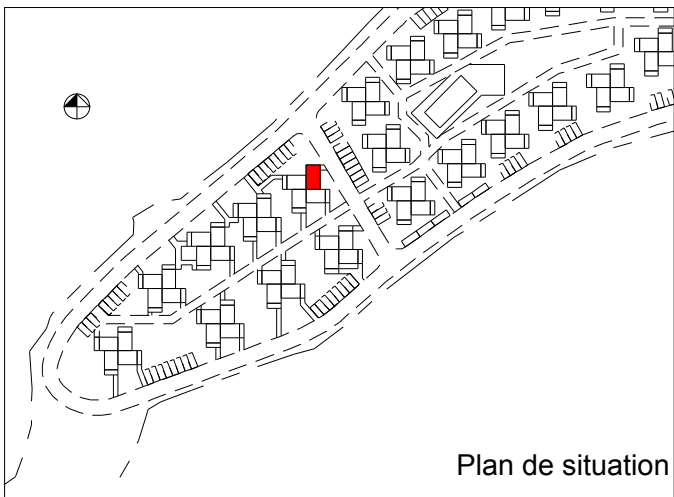
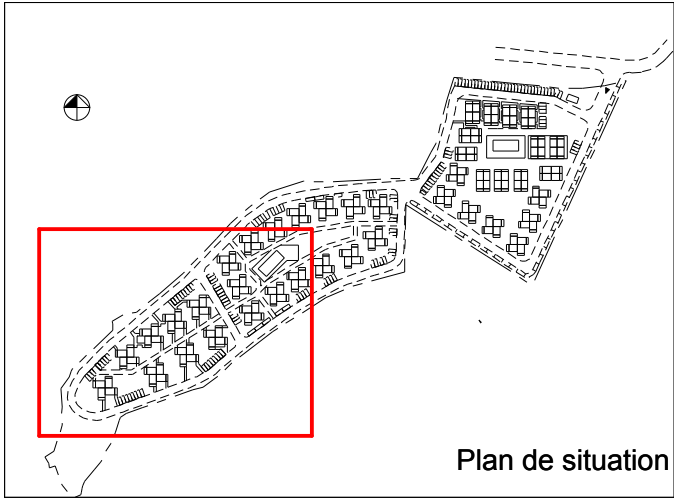


# RESIDENCE "LE CHATEAU DE LA MER"

161 rue Yves Brayer  
MANDELIEU LA NAPOULE 06210

## ILOT D



*Le Château de  
la Mer*

### TABLEAU DES SURFACES

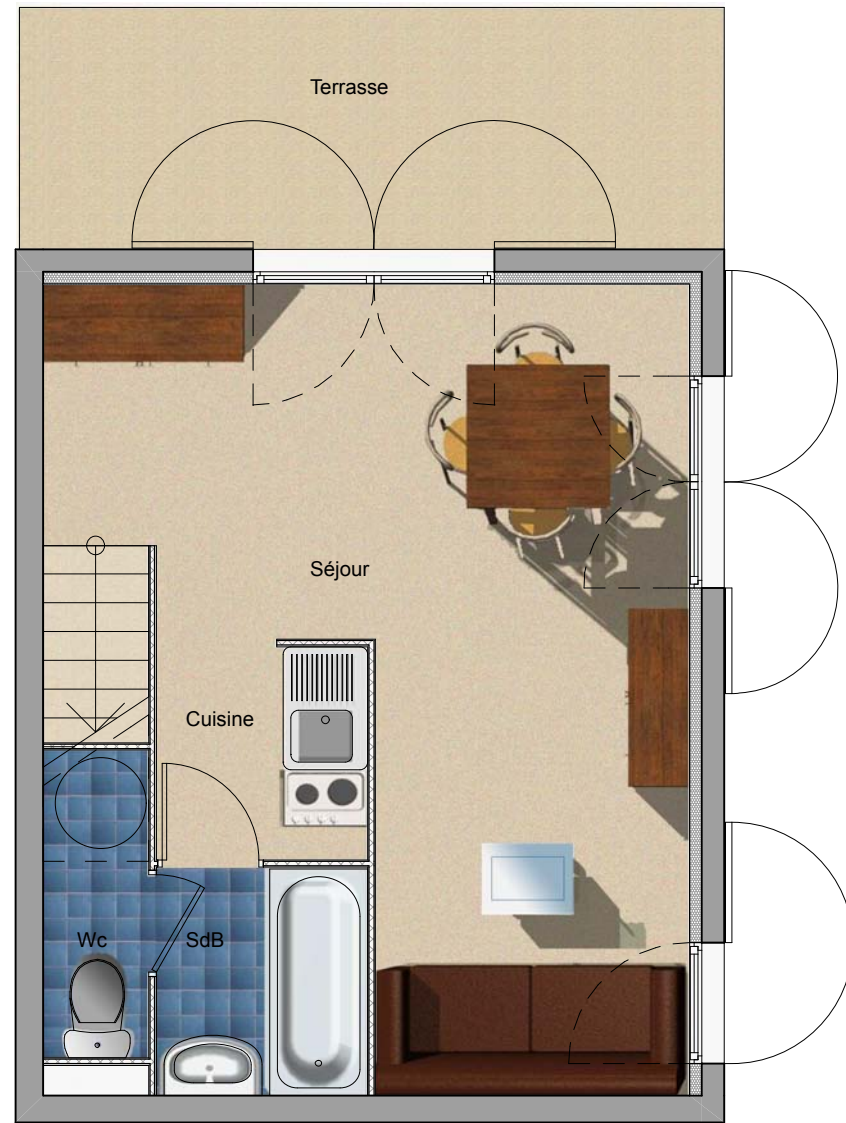
Sejour :	15.87 m <sup>2</sup>
Chambre:	12.37 m <sup>2</sup>
Cuisine:	2.01 m <sup>2</sup>
Wc:	0.84 m <sup>2</sup>
SdB :	2.11 m <sup>2</sup>
<b>Total habitables</b>	<b>33.20 m<sup>2</sup></b>
Terrasse:	7.20 m <sup>2</sup>
<b>Total surfaces privatives</b>	<b>40.40 m<sup>2</sup></b>

Lgt n° : **D14**

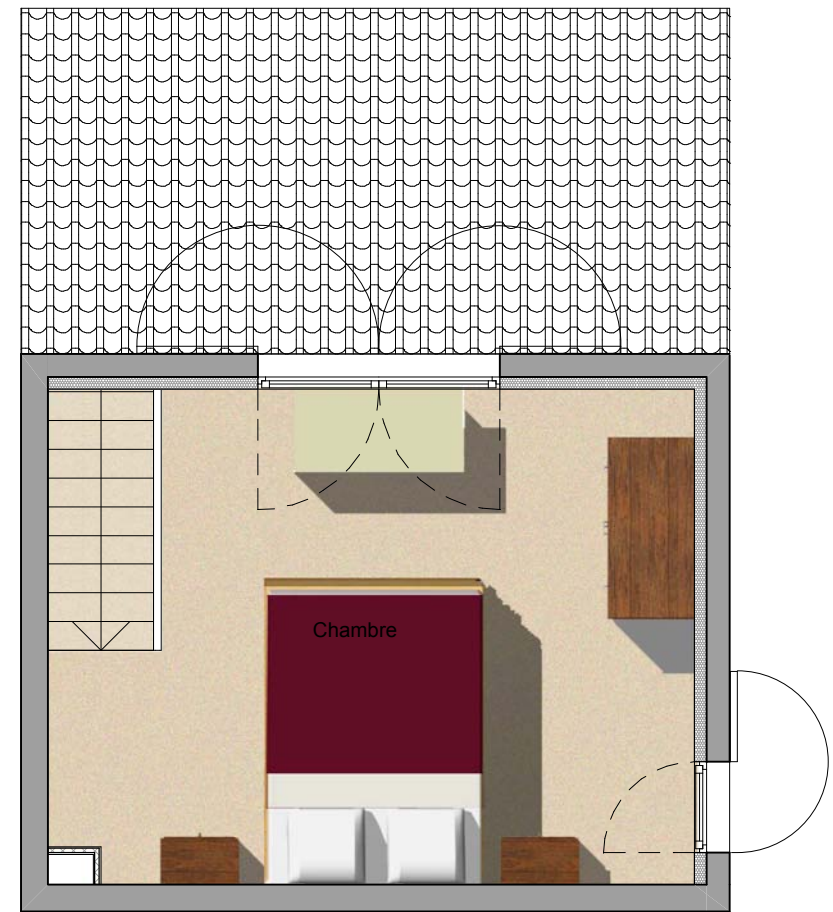
**T2 DUPLEX**

**SNC LES  
GRENADINES**

Document établi par  
**EREME ARCHITECTURE**  
MARS 2008



RDC



R+1

